

CERTIFICATE OF LOCATION OF GOVERNMENT CORNER

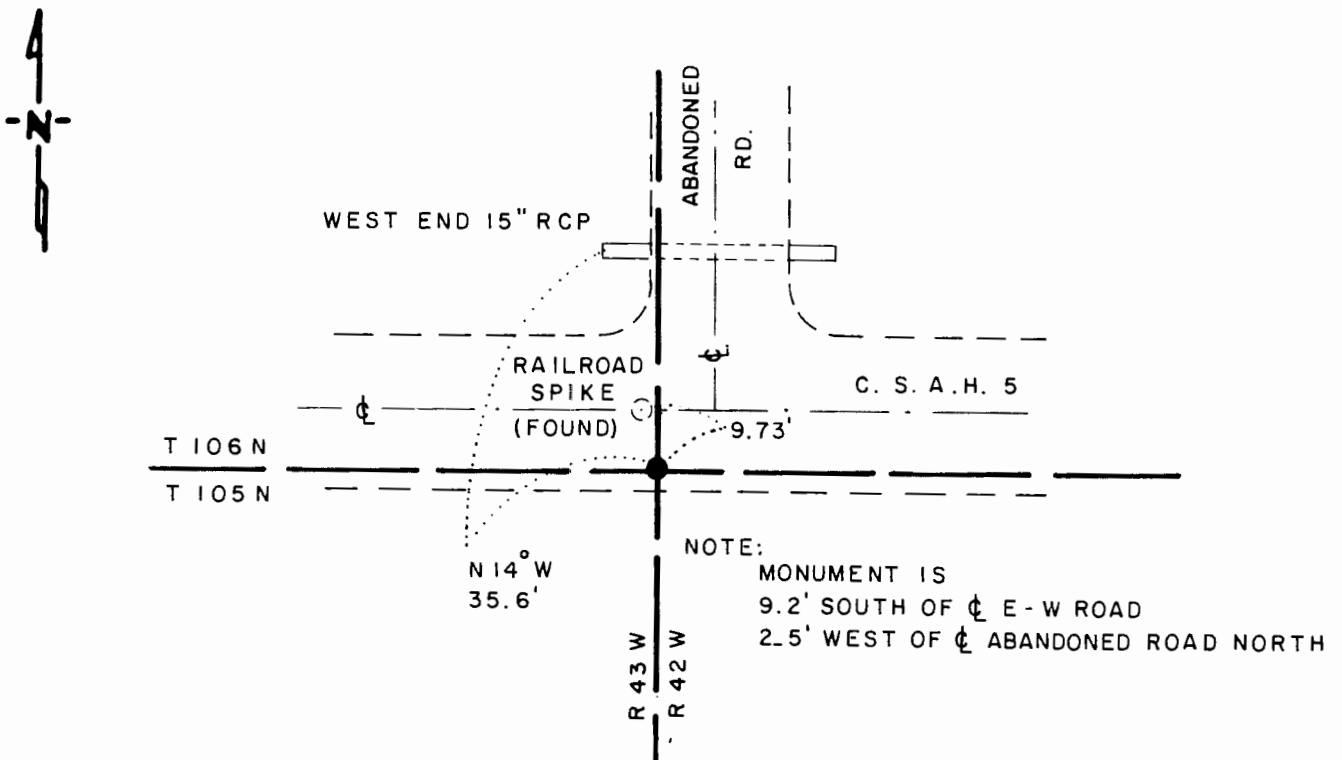
NORTHEAST Corner of Section 1, Township 105 N, Range 43 W, 5th P.M.

STATE OF MINNESOTA, County of MURRAY

At the corner location shown on the sketch

- On 7-24-91 found a 3/8" DIAMETER IRON ROD WITH PLASTIC CAP
DATE STAMPED RLS #12967, DOWN 0.10'
- left monument as found, lowered monument, removed monument (explain)
- On _____ placed a _____
DATE

SKETCH OF REFERENCE TIES



NOTE:
 MONUMENT IS
 9.2' SOUTH OF \oplus E - W ROAD
 2.5' WEST OF \oplus ABANDONED ROAD NORTH

1983 MURRAY COUNTY
 COORDINATE SYSTEM
 N = 131,916.078
 E = 453,349.530

BEARING OBSERVED WITH COMPASS

Statement of evidence relative to this corner location is on back of page

J.B.M. 7-29-91
WMA 12.00.00.01

I hereby certify that this document and the data contained herein was prepared by me or under my direct supervision.

Bruce W. Shipped 8-12-91
SIGNATURE DATE

Registration No. 17003

Land Surveyor, Professional Engineer

County Surveyor, County Engineer

OFFICE OF THE COUNTY RECORDER
County of MURRAY

I hereby certify that this document was filed in the Co. Recorders office at _____ M. on the _____ day of AUG 15 1991 A.D., 19 _____

County Recorder James V. Johnson
By _____, Deputy

DOCUMENT NO. _____

The DNR Bureau of Engineering contacted the following for survey information:

Mn Secretary of State's Office
Murray County Recorder's Office and Highway Engineer's Office
Mn/DOT Office in Willmar
Mn/DOT Office in St. Paul
Sioux Engineering of Windom
Sioux Engineering of Tyler
Madsen Land Surveying of Fairmont
Madsen Land Surveying of Worthington
Rieke Carroll Muller Associates of Gaylord

- 1861 U.S. General Land Office notes obtained from the Secretary of State's Office show the corner marked with a post and a charred stake in a mound of earth and sod with trench as per instructions.
- 1953 DNR Bureau of Engineering used the intersection of the center line of roads north and west and a fence south as the location of the corner. A description of what was set to mark corner is not given.
- No Date A right-of-way map for State Trunk Highway Number 91 obtained from the Mn/DOT Office in St. Paul shows a stone in place at corner. The corner is shown:
779.4 feet from POST Station 365+77.6 with an angle of $102^{\circ}00'$ from the forward tangent
- 1962 The plat of SMITH SUBDIVISION by Martin E. Koopman, County Surveyor, obtained from the County Recorder's Office shows a symbol for corner but does not indicate what was found or set. The corner is shown:
779.4 feet from a point on the center line of State Highway 91
- 1973 DNR Bureau of Engineering set a railroad spike for corner on the center line of a road and in line with a fence south. The following ties were taken to the railroad spike:
X on top west end of concrete culvert, north, 25.89 feet
X on top east end of concrete culvert, northeast, 37.65 feet
2597.45 feet from the north quarter corner of Section 6
2633.90 feet from the east quarter corner of Section 36
The following is also noted:
got some metal attraction in area of corner
- 1973 DNR Bureau of Engineering contacted Neil Sankey, 58 year old owner of the E-1/2 NE-1/4 of Section 36, for testimony regarding this corner. Mr. Sankey said that a stone is in place at corner.
- 1978 A worksheet by Gary Martin, RLS #12967, obtained from Madsen Land Surveying shows that corner was established but a description of what method was used is not given. The corner is shown:
2622.05 feet from the east quarter corner of Section 1
5247.18 feet from the northeast corner of Section 12
A description of what was set to mark corner is not given.

- 1979 November, DNR Bureau of Engineering found an iron pipe with a plastic cap stamped RLS #12967 at corner. The iron pipe was found to be:
9.70 feet south-southeasterly of the railroad spike set for corner in 1973
2594.77 feet from the north quarter corner of Section 6
2643.07 feet from the east quarter corner of Section 36
Contacted Gary Martin, RLS #12967, and asked him how the location of the iron pipe was determined. Gary said the location of the corner was established by doubling over the distance and projecting the line from the north quarter corner of Section 1 through the north sixteenth of the northeast quarter of Section 1.
- 1981 September, field notes by Gary Martin, RLS #12967, obtained from Madsen Land Surveying show that a 3/8 inch rebar was found at corner. The corner is shown:
9.2 feet south of the center line of an east-west road
2614.02 feet from the east quarter corner of Section 1
5246.96 feet from the northeast corner of Section 12
2632.16 feet from the north quarter corner of Section 1
1318.35 feet from a spike found in the area of the north sixteenth corner of the northeast quarter of Section 1
0.03 of a foot off the easterly projection of a line from the north quarter corner of Section 1 through a spike found in the area of the north sixteenth corner of the northeast quarter of Section 1
- 1991 July, DNR Bureau of Engineering found the railroad spike set for corner in 1973 and the capped iron rod set for corner in 1978. Did not dig for record stone because area of road is in a cut section of about 20 feet. The iron rod was found to be:
2594.62 feet from the north quarter corner of Section 6
2614.13 feet from the east quarter corner of Section 1
5246.99 feet from the northeast corner of Section 12
9.73 feet south-southeasterly of the railroad spike
777.57 feet from a POST station of Highway 91 that is on the north line of Section 6 with an angle of $102^{\circ}15'10''$ from the forward tangent

Analysis of the above information led the DNR Bureau of Engineering to conclude that the found capped iron rod marks the location of the corner.